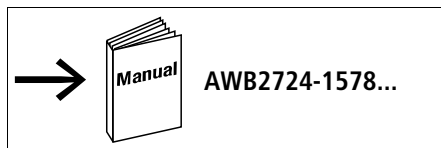
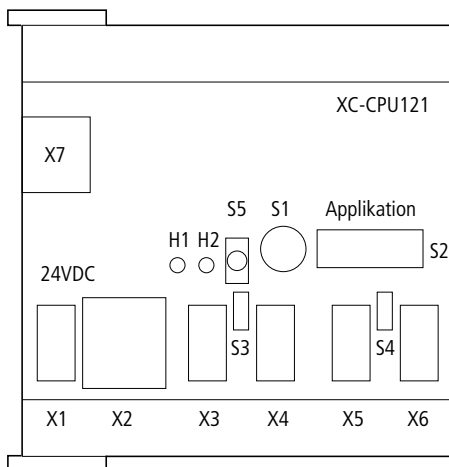


XC-CPU121-2C256K



Das Gerät ist für den industriellen Einsatz geeignet (→ EN 55011/22 Klasse A).
The device is suitable for use in industrial environments (→ EN 55011/22 Class A).
L'appareil a été conçu pour l'emploi en milieu industriel (→ EN 55011/22 classe A).
L'apparecchio è adatto per uso in ambienti industriali (→ EN 55011/22 Classe A).
Este aparato es adecuado para aplicaciones industriales (→ EN 55011/22 clase A).

Frontansicht
Front view
Face avant
Vista frontale
Vista de frente



S1	Mode
S2	Applikationsschalter
S3	Schalter für Busabschlusswiderstände für CAN 1
S4	Schalter für Busabschlusswiderstände für CAN 2
S5	SET-Taster
X1	Power Supply
X2	COM1-Programmier-Interface (RS 232)
X3	COM2-Interface (RS 232/RS 485)
X4	CANopen-Interface CAN1
X5	CANopen-Interface CAN2
X6	CANopen-Interface CAN2
X7	Multimedia Card (MMC)
H1	LED RUN/STOP
H2	LED SF

S1	Mode
S2	Application switch
S3	Switch for bus termination resistors for CAN 1
S4	Switch for bus termination resistors for CAN 2
S5	SET button
X1	Power Supply
X2	COM1 programming interface (RS 232)
X3	COM2 interface (RS 232/RS 485)
X4	CANopen interface CAN1
X5	CANopen interface CAN2
X6	CANopen interface CAN2
X7	Multimedia card (MMC)
H1	LED RUN/STOP
H2	LED SF

S1	Mode
S2	Switch d'application
S3	Sélecteur résistances de terminaison de bus pour CAN 1
S4	Sélecteur résistances de terminaison de bus pour CAN 2
S5	Bouton SET
X1	Alimentation
X2	Interface de programmation COM1 (RS 232)
X3	Interface COM2 (RS 232/RS 485)
X4	Interface CANopen CAN1
X5	Interface CANopen CAN2
X6	Interface CANopen CAN2
X7	Carte Multimédia (MMC)
H1	DEL RUN/STOP
H2	DEL SF

S1	Modalità
S2	Interruttore applicazione
S3	Interruttore per resistenze di terminazione bus per CAN 1
S4	Interruttore per resistenze di terminazione bus per CAN 2
S5	Tasto SET
X1	Alimentazione
X2	Interfaccia di programmazione COM1 (RS 232)
X3	Interfaccia COM2 (RS 232/RS 485)
X4	Interfaccia CANopen CAN1
X5	Interfaccia CANopen CAN2
X6	Interfaccia CANopen CAN2
X7	Scheda Multimedia (MMC)
H1	LED RUN/STOP
H2	LED SF

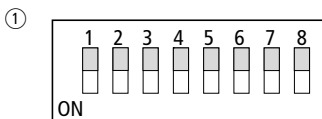
S1	Modo
S2	Interruptor de aplicación
S3	Interruptor para cargas bus para CAN 1
S4	Interruptor para cargas bus para CAN 2
S5	Tecla SET
X1	Alimentación de corriente
X2	Interface de programación COM1 (RS 232)

X3	Interface COM2 (RS 232/RS 485)
X4	Interface CANopen CAN1
X5	Interface CANopen CAN2
X6	Interface CANopen CAN2
X7	Tarjeta multimedia (MMC)
H1	LED RUN/STOP
H2	LED SF

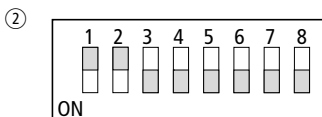
Mode (S1) – Modalità (S1) – Modo (S1)

Position – Posizione – Posición	Funktion – Function – Funzione – Función – Fonction
0	STOP
1	push SET-Button (S5) → RUN
2, 3, ..., 7	STOP
8	STOP; push SET-Button (S5) 3 sec. → Defaultwerte aktiv – Default value active – Valeur par défaut active – Valore di default attivo – Valor predeterminado activo
9	STOP; push SET-Button (S5) 3 sec. → Reset – Raz – Rearme

Applikationsschalter – Application switch – Switch d'application – Interruttore applicazione – Interruptor de aplicación



1...8 ON (Default)



1, 2 ON; 3...8 OFF = 3

Configuration	Switch No	Function
application	1, 2, ..., 8 = ON	Number 255
	1 = OFF; 2, 3, ..., 8 = ON	Number 254

Node Id CAN (8 = no function)	1 = ON; 2, 3, ..., 8 = OFF	Number 1
	1, 2, ..., 8 = OFF	Number 0

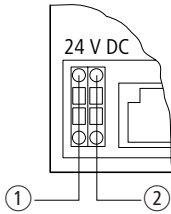
Node Id routing (8 = ON : CAN2) (8 = OFF: CAN1)	1 = ON; 2, 3, ..., 7 = OFF	Node Id 1
	1, 2, ..., 7 = OFF	not ok → 127

Node Id routing (8 = ON : CAN2) (8 = OFF: CAN1)	1, 2, ..., 7 = ON	Node Id 127
	1 = OFF; 2, 3, ..., 7 = ON	Node Id 126

Node Id routing (8 = ON : CAN2) (8 = OFF: CAN1)	1 = ON; 2, 3, ..., 7 = OFF	Node Id 1
	1, 2, ..., 7 = OFF	not ok → 127

Anschlüsse – Connections – Raccordements – Collegamenti – Conexiones

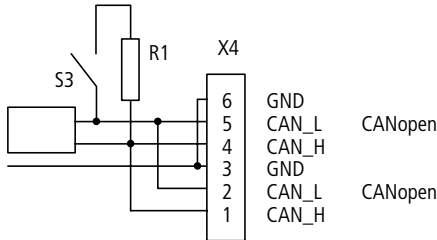
Power Supply 24 V DC (X1)



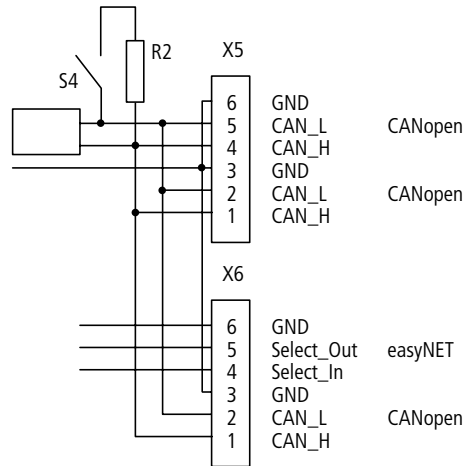
2-poliger, steckbarer Federzugklemmenblock
 2-pole, plug-in springloaded terminal block
 Bornier à ressort enfichable, 2 pôles
 Morsettiera ad innesto a molla, 2 poli
 Bloque de bornes de resorte enchufable de 2 polos

- ① 24 V DC
- ② 0 V

CAN1 (X4)



CAN2 (X5, X6)



02/06 AWA2724-2304

- X4, 5, 6 6-poliger, steckbarer Federzugklemmenblock
- R1, 2 Busabschlusswiderstand 120 Ω
- S3, 4 Schalter für Busabschlusswiderstand (S3: CAN1, S4: CAN2)
- X4, 5, 6 6-pole, plug-in springloaded terminal block
- R1, 2 Bus termination resistor 120 Ω
- S3, 4 Switch for bus termination resistor (S3: CAN1, S4: CAN2)
- X4, 5, 6 Bornier à ressort enfichable, 6 pôles
- R1, 2 Résistance de terminaison de bus 120 Ω
- S3, 4 Sélecteur résistances de terminaison de bus (S3: CAN1, S4: CAN2)

- X4, 5, 6 Morsettiera ad innesto a molla, 6 poli
- R1, 2 Resistenza di terminazione bus 120 Ω
- S3, 4 Interruttore per resistenza di terminazione bus (S3: CAN1, S4: CAN2)
- X4, 5, 6 Bloque de bornes de resorte enchufable de 6 polos
- R1, 2 Carga bus 120 Ω
- S3, 4 Interruptor para carga bus (S3: CAN1, S4: CAN2)

S3, 4



Ausgeschaltet – Switched off –
 Arrêt – Spento – Abierto
 (Default)

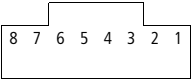


Eingeschaltet – Switched on –
 Marche – Acceso – Cerrado

COM1 (X2)

RS-232-(Programmier-)Interface – RS 232 (programming) interface – Interface de programmation RS 232 –
Interfaccia (di programmazione) RS 232 – Interface (de programación) RS 232

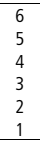
RJ 45	RS 232
	Signal Segnale Señal
	8 RxD
	7 GND
	6 –
	5 TxD
	4 GND
	3 –
	2 –
	1 –



COM2 (X3)

RS-232-/RS-485-Interface – RS 232/RS 485 interface – Interface RS 232/RS 485 – Interfaccia RS 232/RS 485

	RS 232	RS 485
	Signal Segnale Señal	Signal Segnale Señal
	6 RxD	–
	5 TxD	–
	4 Vcc	–
	3 GND	–
	2 –	Tx-/Rx-
	1 –	Tx+/Rx+

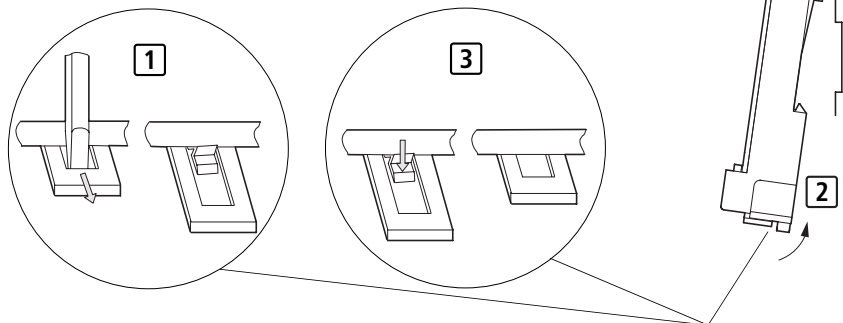


6-poliger, steckbarer Federzugklemmenblock
6-pole, plug-in springloaded terminal block
Bornier à ressort enfichable, 6 pôles
Morsettiera ad innesto a molla, 6 poli
6-poliger, steckbarer Federzugklemmenblock

- ① externer Busabschlusswiderstand (120 Ω), 1. und letztes Gerät am Bus
external bus termination resistor (120 Ω), first and last device at bus
résistance de terminaison externe de bus (120 Ω), premier et dernier appareil sur le bus
resistenza di terminazione bus esterna (120 Ω), primo e ultimo apparecchio sul bus
resistencia de terminal externa de bus (120 Ω), primero o último aparato en el bus

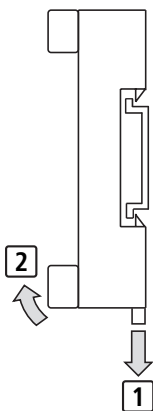
Montage – Fitting – Montaggio – Montaje

Baugruppenträger/Hutschiene
Module/top-hat rail
Support arrière/profilé chapeau
Modulo/guida simmetrica
Módulo/guía simétrica



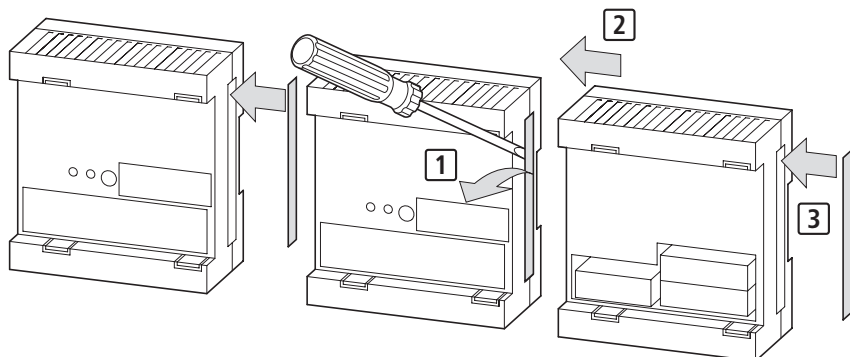
Demontage – Dismantling – Démontage – Smontaggio – Desmontaje

Baugruppenträger/Hutschiene
Module/top-hat rail
Support arrière/profilé chapeau
Modulo/guida simmetrica
Módulo/guía simétrica



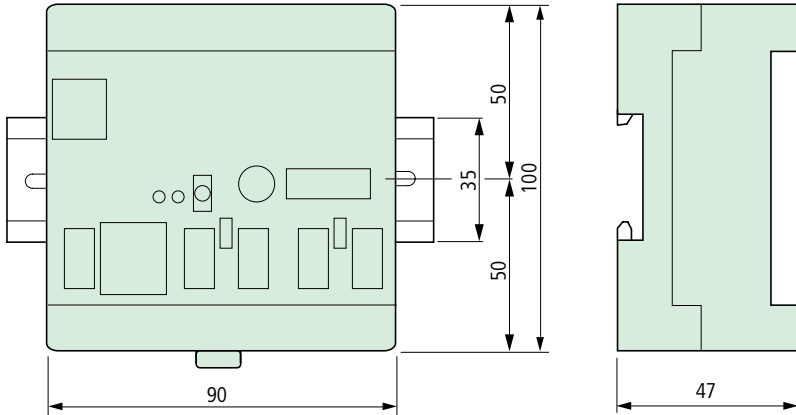
02/06 AWA2724-2304

XC-CPU121-2C256K ↔ XIO-EXT121-1

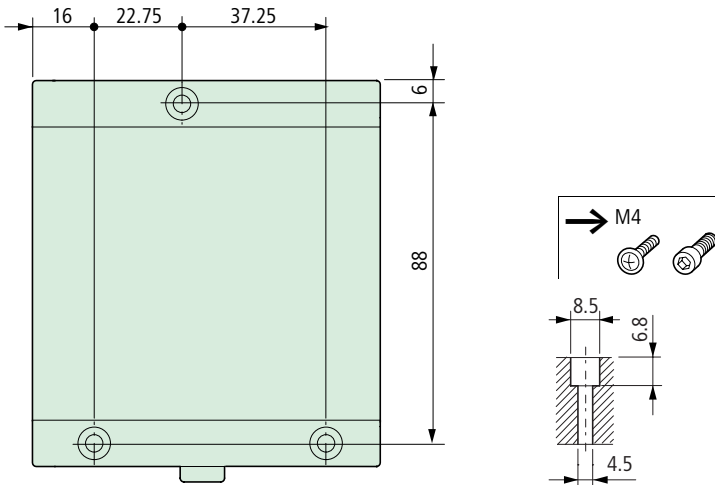


Abmessungen – Dimensions – Dimensioni – Dimensiones [mm]

Basisbaugruppenträger/Erweiterungsbaugruppenträger – Base module/expansion module – Support arrière (de base)/support arrière (d'extension) – Modulo di base/modulo di espansione – Módulo base/módulo de ampliación



Schraub-Befestigung der Baugruppenträger auf der Montageplatte – Screw fixing of the modules on the mounting plate – Fixation par vis des supports arrière sur la platine de montage – Fissaggio a vite dei moduli di base su piastra di montaggio – Fijación por tornillo de los módulos en la placa de montaje



02/06 AWA2724-2304