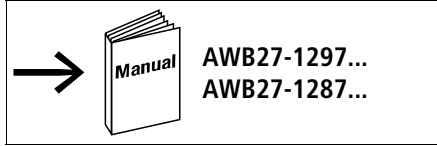


ZB4-501-TC1



Das Gerät ist für den industriellen Einsatz geeignet (→ EN 55011/22 Klasse A).
The device is suitable for use in industrial environments (→ EN 55011/22 Class A).
L'appareil a été conçu pour l'emploi en milieu industriel (→ EN 55011/22 classe A).
L'apparecchio è adatto per uso in ambienti industriali (→ EN 55011/22 Classe A).
El aparato es adecuado para uso en ambiente industrial (→ EN 55011/22 clase A).

- ① Steckbare Schraubklemme
- ② RS 232-Schnittstelle (→ Modem)
- ③ LED-Anzeige
- ④ Suconet-K-Schnittstelle (Suconet-K-Strang)
- ⑤ Suconet-K-Schnittstelle (Master Suconet K)

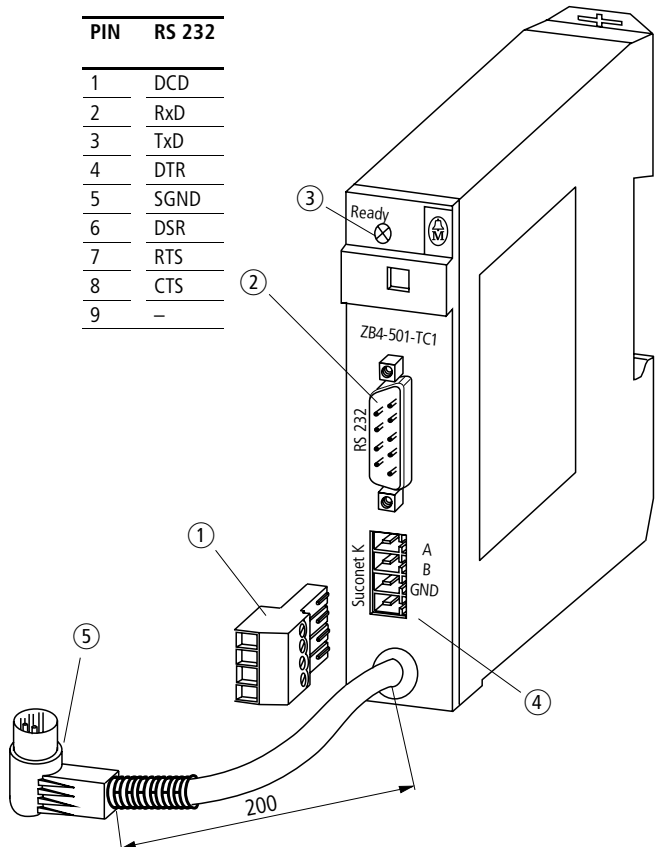
- ① Plug-in screw-terminal
- ② RS 232 interface (→ Modem)
- ③ LED status display
- ④ Suconet K interface (Suconet K line)
- ⑤ Suconet K interface (Master Suconet K)

- ① Bornier à vis enfichable
- ② Liaison RS 232 (→ Modem)
- ③ Afficheur d'état DEL
- ④ Liaison Suconet K (Branche Suconet K)
- ⑤ Liaison Suconet K (Maître Suconet K)

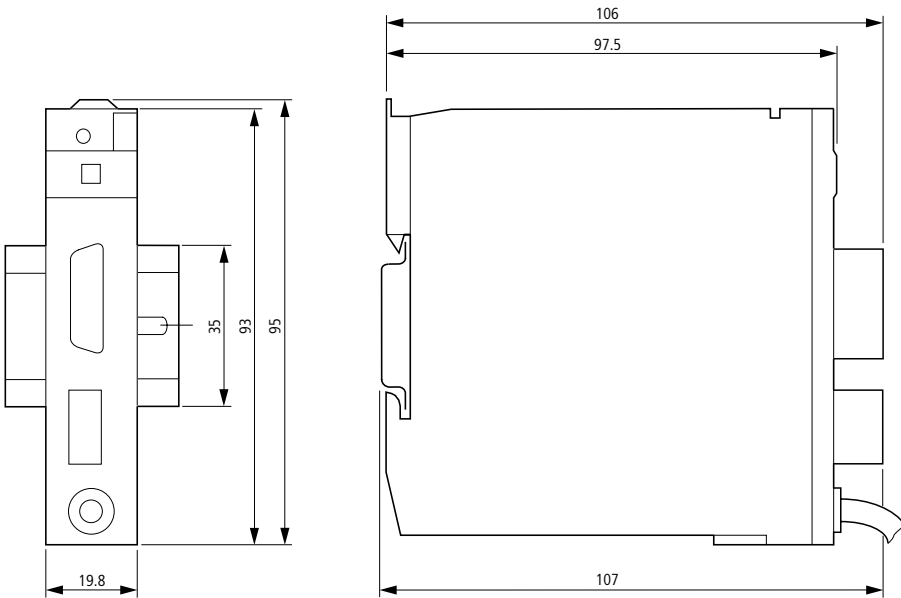
- ① Morsetto a vite sfilabili
- ② Interfaccia RS 232 (→ Modem)
- ③ Visualizzazione di stato à LED
- ④ Interfaccia Suconet K (Linea Suconet K)
- ⑤ Interfaccia Suconet K (Master Suconet K)

- ① Terminal roscados enchufables
- ② Interface RS 232 (→ Modem)
- ③ LED visualización estado
- ④ Interface Suconet K (Linea Suconet K)
- ⑤ Interface Suconet K (Master Suconet K)

PIN	RS 232
1	DCD
2	RxD
3	TxD
4	DTR
5	SGND
6	DSR
7	RTS
8	CTS
9	-

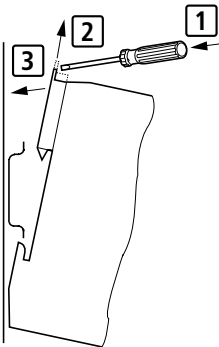


Abmessungen – Dimensions – Dimensioni – Dimensiones [mm]



Montage/Mounting/Montaggio/Montaje

auf Montageplatte mit 35-mm-Hutschiene ①
on mounting plate with 35 mm top-hat rail ①
sur plaque de montage avec profilé-support 35 mm ①
su piastra di montaggio con guida DIN 35 mm ①
sobre placa de montaje con guía simétrica de 35 mm ①



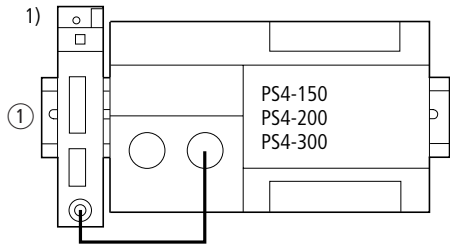
Anschluss

Connection

Raccordement

Collegamento

Conexiónes



- 1) Suconet-K-Adresse fest eingestellt (Adresse 2)
Suconet K address preset (address 2)
Adresse Suconet K prédéfinie (adresse 2)
Indirizzo di Suconet K preimposto (indirizzo 2)
Dirección Suconet K permanentemente especificada (dirección 2)

07/97 AWA27-1607